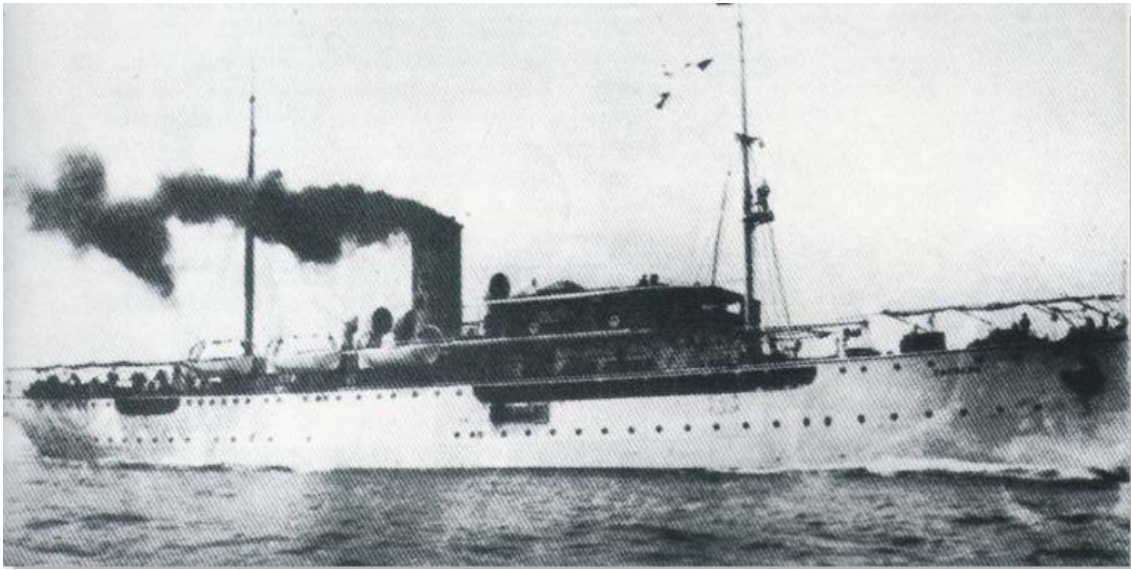


# CAPRERA



Mixed vessel to transport cargo and passengers built by the Italian shipyard Fratelli Orlando & Co, Livorno, in 1910.

## Features:

She displaced 1,875 tons, length 93 meters and 11 meters of beam. In February 1917, became part, as an armed auxiliary cruiser, the Regia Marina. Armed with four guns, two on each side.

## Sinking:

On February 5, 1918, was torpedoed by the U64, resulting broken propeller and rudder. A life was lost.

